

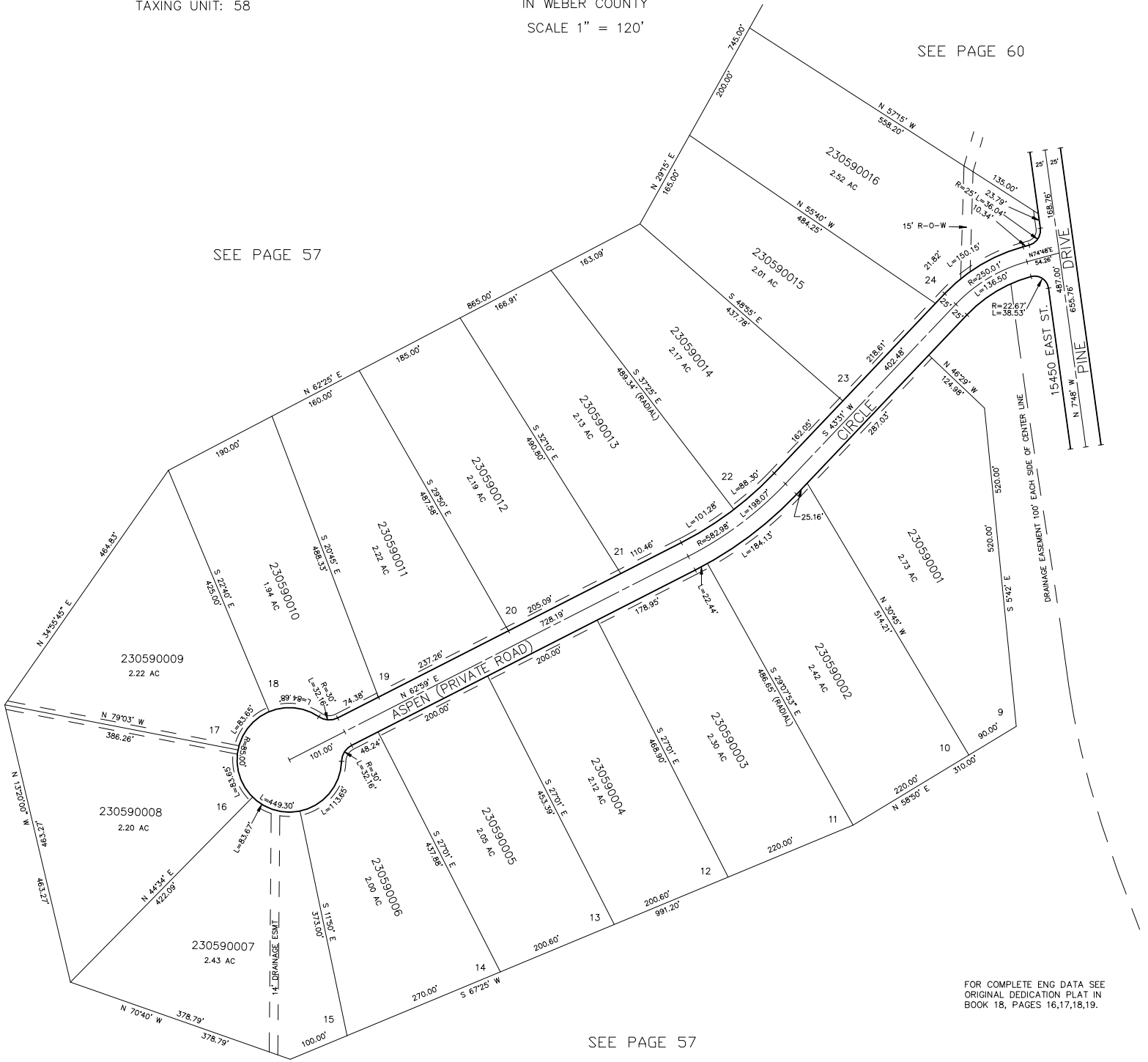
PART OF SECTION 14, T.6N., R.3E., S.L.B. & M.
CAUSEY ESTATES SUBDIVISION NO. 1

LOTS 9 - 24
IN WEBER COUNTY
SCALE 1" = 120'

TAXING UNIT: 58

SEE PAGE 60

SEE PAGE 57



FOR COMPLETE ENG DATA SEE
ORIGINAL DEDICATION PLAT IN
BOOK 18, PAGES 16,17,18,19.

SEE PAGE 57